

JANUARY



BESIX Group receives the Belgian **Top Employer Award** for the sixth consecutive year.



◀ The BESIX-Plenary Group consortium reaches financial close for the **Khalifa City School** project, using an augmentation procurement framework within the Zayed City Schools Public-Private Partnership (UAE).

FEBRUARY

BESIX RED France sells **PURE – La Madeleine** to Swiss Life Asset Managers France. The 8,000 m² office building, designed for new work practices and environmental standards, is scheduled for delivery mid-2027.



MILESTONES OF 2025

APRIL



◀ Jacques Delens completes the major renovation of the **Vandeuren social housing district** in Ixelles (Belgium), creating 132 new units with a focus on circularity and heritage preservation.

BESIX Infra rehabilitates a **four-kilometre stretch of road in Sint-Gillis-Waas** (Belgium), including a separate sewage system, new deck slab, and wider pedestrian and cycling paths.

The **Khalifa University Student Accommodation PPP** (Abu Dhabi, UAE) wins two IJGlobal Awards for the Middle East and North Africa: Social Infrastructure Deal of the Year and PPP Deal of the Year.

JULY

In Antwerp, the first **Scheldt Tunnel element** is immersed. By December 2025, all elements were successfully installed beneath the Scheldt, marking a major step forward in the **Oosterweel Link** project (Belgium). ▶

BESIX Watpac delivers the **Eastwood Private Hospital** in Adelaide (Australia), meeting the growing demand for healthcare in the region.



JUNE

◀ Excavation works for the 1,545-metre **Casacastalda Tunnel** are completed, marking a key milestone in upgrading State Road 318 in Umbria (Italy).



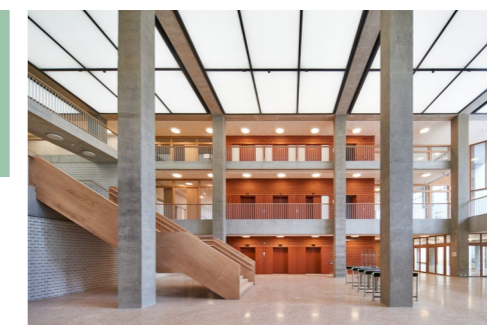
The concrete structure of **POST Rotterdam** (The Netherlands) tops out at 155 metres. The tower will feature 305 apartments and a hotel.



LuxTP completes structural works for the **Luxembourg Red Cross's new headquarters** in Howald.

BESIX Nederland and Franki Grondtechnieken complete the construction pit and foundations for the **PALLAS nuclear reactor** in Petten (The Netherlands), ensuring a reliable supply of medical isotopes for 30,000 patients daily.

MAY



◀ BESIX, Valens, and In Advance deliver **Média Square**, the new 38,000 m² headquarters and production centre of the RTBF (Belgium).

Socoetra replaces the **Louheau railway bridge** in Pepinster (Belgium), installing a new 270-tonne metal bridge spanning 38.5 metres within four weeks.

AUGUST



Wust delivers **Nexova's Cybersecurity Centre of Excellence** in Transinne (Belgium), inaugurated in the presence of the Belgian Minister of Defence.

SEPTEMBER



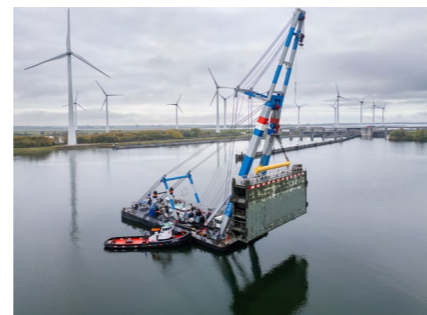
▲ BESIX Infra, BESIX Infra Support and BESIX Unitec open their **new shared headquarters** in Schelle (Belgium). The project showcases BESIX Group's integrated service model, with several entities involved in its delivery.

Construction begins on **Belgium's first near-surface nuclear waste disposal facility** for NIRAS/ONDRAF in Dessel (Belgium). Both BESIX and Vanhout are involved.

BESIX, Franki Foundations, BESIX Environment, BESIX Infra and BESIX Unitec successfully complete the **CO₂ Performance Ladder recertification audit** in Belgium and The Netherlands.

BESIX Watpac finishes façade and roof cladding for the **One New Zealand Stadium** in Christchurch.

OCTOBER



▲ Renovation begins on the **Krammer lock complex** in Bruinisse (The Netherlands). BESIX, BESIX Infra, BESIX Unitec and Franki Foundations are involved in this project.

BESIX Nederland, within the De Groene Boog consortium, complete the energy-neutral **A16 motorway extension** in Rotterdam (The Netherlands).

The GelreGroen consortium, which includes BESIX Nederland, achieves financial close for the **VIA15 motorway extension** (The Netherlands). BESIX Invest played a pivotal role in structuring the financing for the project.

Construction of **Aquafin's sludge mono-treatment plant** in Ghent (Belgium) reaches halfway. The facility will recover energy from the sewage sludge of four million residents in Flanders.



DECEMBER

▲ BESIX delivers the **Zayed National Museum** on Saadiyat Island, Abu Dhabi (UAE). It stands as a tribute to the founding father of the UAE, Sheikh Zayed bin Sultan Al Nahyan.

After the first section of the **Bypass** in Antwerp (Belgium) is opened for traffic, the demolition of the iconic Merksem viaduct begins. The Bypass will accommodate traffic, while the viaduct is replaced by a sunken Ring Road as part of the **Oosterweel Link** project.



▲ BESIX and Orascom Construction deliver the **Grand Egyptian Museum** in Cairo. It is the largest museum dedicated to a single civilisation.

BESIX, Modern Building Leaders (MBL) and Boskalis deliver a quay wall of over 4.6 kilometres at **Port of NEOM** in Oxagon (Saudi Arabia).

The roof of the **Aramco Stadium** in Al Khobar (Saudi Arabia) is successfully depropped, which means the structure is officially self-standing and self-supporting.

The **Beveren Tunnel** in Kallo (Belgium) reopens after a complete renovation by TM Bever, which includes BESIX, BESIX Infra and BESIX Unitec. It is now among the most modern motorway tunnels in Europe.

NOVEMBER

BESIX Group mobilises full in-house expertise for BESIX RED's mixed-use development, **Matisse 16** in Evere (Brussels, Belgium). Franki Foundations, Vanhout, Jacques Delens, BESIX Power and ComTIS Energy are involved in its realisation.