



LOCAL SOCIO-ECONOMIC AND COMMUNITY ENGAGEMENT

The Group supports local socioeconomic development wherever possible, helping strengthen the resilience and well-being of the communities where its teams operate. Through long-term partnerships and locally rooted initiatives, BESIX seeks to create a positive, meaningful impact in the regions where it operates.

Engaging with Indigenous peoples and local communities

BESIX Group's approach to community relations is guided by engagement with affected communities, including Indigenous peoples, and by taking into account the specific context of its projects.

In practice, the Group aims to identify and consult local stakeholders (e.g. municipalities, associations, NGOs, Indigenous groups) to understand expectations and minimise potential adverse impacts through inclusive dialogue, often in coordination with client and regulatory requirements.

This approach represents the Group's baseline process for community engagement across projects.

First Nations partnerships

In regions where Indigenous peoples have formal governance structures such as Australia, BESIX Watpac applies dedicated partnership frameworks.

In Australia, BESIX Watpac demonstrates a strong commitment to creating employment opportunities for First Nations peoples. Through its Reconciliation Action Plan (RAP) and Indigenous Employment and Training Framework, the company provides training pathways such as apprenticeships and traineeships, empowering local communities to gain sustainable employment.

In 2025, Innova, continued rolling out its National Indigenous Participation Policy and National Indigenous Procurement Policy across projects, and maintained significant investment in First Nations businesses, reinforcing cultural awareness and economic independence for Aboriginal and Torres Strait Islander peoples in the construction industry.

BUILDING STRONGER COMMUNITIES IN GABON

In Gabon, the BESIX project team strengthened its collaboration with local communities, demonstrating how engineering excellence can go hand in hand with social impact. In the remote village of Ebel-Abanga, the absence of potable water led BESIX to install an atmospheric water generator, capable of producing up to 460 litres of potable water per day, avoiding the consumption of an estimated 62,000 plastic bottles per year and preventing over 1.57 tonnes of plastic waste as well as 12,500 kg of CO₂ emissions linked to transport.

Beyond environmental benefits, the team also supported the community through local health campaigns and initiatives for education, helping to improve living conditions. This illustrates BESIX's commitment to collaborating with communities and delivering value beyond its projects.

BESIX WATPAC COMMUNITY SUPPORT

Giving back to the community is an important part of BESIX Watpac's corporate responsibility. In 2025, the company contributed a total of AUD 392,000 to community initiatives through a combination of employee and subcontractor fundraising, sponsorships, donations, and BESIX Watpac Community Fund grants. Recipients of grants throughout the year included West Moreton Health Foundation, This is a Conversation Starter (TIACS), Movember and Cancer Council South Australia.

AUD 183,000
through staff and subcontractor fundraising

AUD 97,000
through charitable donations

AUD 112,000
through sponsorships



SOCIETAL ENGAGEMENT

BESIX engages with communities, authorities, NGOs and Indigenous partners wherever its projects are located. Through communication and respectful collaboration, the Group aims to support community needs where relevant and contribute through practical actions that bring value locally.

While societal engagement is not a material topic in its 2025 double materiality assessment, the Group shares selected local initiatives to illustrate how it supports communities and partners through responsible project delivery and voluntary actions.

The Group focuses on two focus areas: promoting local socioeconomic development, and engaging constructively with authorities, civil society organisations and community stakeholders. This includes dialogue processes, impact mitigation measures, and long-term partnerships

that reflect local needs and expectations. These practices strengthen the Group's social licence to operate and contribute to resilience and inclusion in the regions where BESIX is active.



Local economy and shared prosperity

Beyond project-based engagement, BESIX promotes local socio-economic development. Through its BESIX Foundation, the Group prioritises local partnerships to ensure that project-generated wealth benefits host communities.

In 2025, the BESIX Foundation supported seven social economy projects in Belgium and France, including initiatives such as La Chaloupe, Racyne and Wake Up Café. These projects create jobs, support vulnerable groups and strengthen the long-term resilience of local communities. Combined with the Foundation’s broader programmes in education, construction and the environment, they contribute to promoting shared prosperity in the regions where the Group operates.

PARTNERSHIPS WITH AUTHORITIES AND NGOs

BESIX maintains respectful, ongoing engagement with local authorities, NGOs and community partners wherever its teams operate. The Group collaborates with Indigenous communities, cultural institutions and local authorities to respect community needs, heritage sensitivities and cultural heritage. It also plays a central role through the BESIX Foundation, mobilising employees and collaborating with local NGOs to create long-lasting solutions.

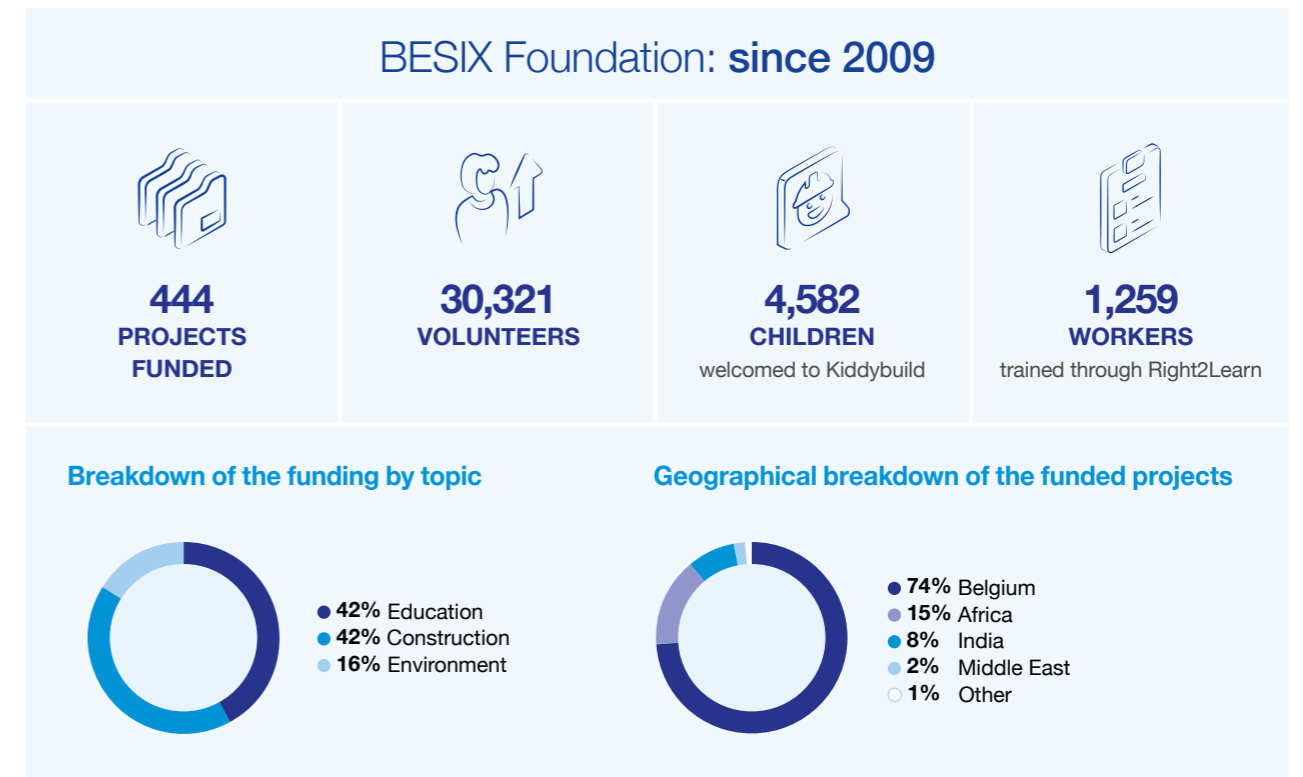
Preserving cultural heritage

In 2025, BESIX strengthened its contribution to global cultural heritage through the successful delivery of two landmark projects: the Zayed National Museum in Abu Dhabi (UAE) and the Grand Egyptian Museum in Cairo. This type of collaboration reflects BESIX’s role in delivering complex infrastructure that supports cultural preservation in host regions.

Working closely with cultural authorities, curators and specialised partners, BESIX ensured that both museums respect historical legacies and incorporate sustainability and community considerations. While heritage assessments are typically led by public bodies, BESIX actively supports consultation processes and integrates their outcomes into project planning, ensuring construction activities respect cultural heritage (read more about these projects on pp. 88-91).

The BESIX Foundation: Building a better world together

Central to BESIX Group’s societal engagement mission is the BESIX Foundation. Since its creation in 2009, the Foundation has mobilised passionate volunteers across the Group to deliver meaningful impact through three pillars: education, construction, and environment.



¹ Several projects are related to more than one pillar.