

BESIX AFFILIATES

The BESIX Affiliates can reflect on a year of steady progress, robust collaboration, and notable achievements across regions and specialities. Their General Manager Jean Polet looks back on 2025's highlights, the impact of teamwork, and the outlook for the future.

2024 (in EUR million)	2025 (in EUR million)
1,229 revenue	1,306 revenue
73.7 EBITDA	82.8 EBITDA
1,934 order book (at 31/12/2024)	2,019 order book (at 31/12/2025)



Galileo (Brussels, Belgium), a project of Jacques Delens



Each BESIX Affiliate has made its mark in 2025, delivering impressive results and driving progress in its own field. Their expertise and commitment have been instrumental in strengthening BESIX Group and building a solid foundation for the future.

Jean Polet
General Manager
of BESIX Affiliates



How would you describe the performance of BESIX Affiliates in 2025?

2025 was a year of steady progress for our regional and specialist entities, with each Affiliate delivering strong margins and reinforcing the Group as a whole. Our teams collaborated whenever it made sense, demonstrating the true value of our integrated approach and preparing BESIX for the years ahead. Every entity played its part in strengthening our collective position.

What were some of the standout achievements across the Affiliates last year?

There were many highlights in 2025. Jacques Delens advanced major social housing renovations in Brussels and delivered key community projects, including a sports hall in Evere. Wust completed flagship projects such as the Nexova Cybersecurity Centre and a new police station in La Louvière. Cobelba delivered a 50-metre outdoor pool for ADEPS in Arlon. In the Grand-Duchy of Luxembourg, LuxTP will complete the new headquarters for the Luxembourg Red Cross in 2026, and the company has signed the extension of the Philharmonie Luxembourg, among others.

Vanhout moved forward with both public and private projects, including buildings for the ONE project by INEOS and the Constructiv office in Brussels. Socogetra made a major contribution to infrastructure renewal in Wallonia and Brussels, including the lines 161 and 124 of the RER. The company's industrial projects were also significant, including the GO4ZERO project (civil works on a decarbonised cement production facility for Holcim) in Obourg. At the end of the year, Socogetra also acquired a 70% stake in Béton Refect SA, a leading player in concrete rehabilitation in Wallonia. This operation will help BESIX Group to be ready for the massive renovation challenge which lies ahead of us. BESIX Environment supported the Group's energy transition by making significant strides on the Hyoffwind large-scale green hydrogen facility in Zeebrugge. BESIX Unitec delivered major utility network works in Antwerp and secured a new framework agreement with Orange for fibre and coaxial connections. BESIX Infra played a key role in mobility projects such as the Oosterweel link in Antwerp and the Beveren tunnel. Franki Foundations continued to support complex foundation

works both in Belgium and abroad, including on the Oosterweel (ROCO) and R4 West and East projects. In September, the company completed the sale of its UK subsidiaries.

What strategic priorities and outlook do you see for BESIX Affiliates in 2026?

With a solid order book of contracts with healthy margins, the BESIX Affiliates are well-positioned for continued growth. Our focus remains on delivering integrated, high-value solutions through a strengthened one-stop-shop model approach, and enhanced collaboration across entities, and mastering risks in a changing environment. I am confident that our teams will continue to drive progress and contribute to the Group's success in 2026 and beyond.



BESIX AFFILIATES PROVIDE

- Design, build, renovation, and maintenance services for road, water, and rail transport infrastructure, as well as for buildings;
- Infrastructure for energy, water and data networks;
- Infrastructure for water treatment and water and hydrogen production;
- Foundation solutions for infrastructure and buildings of all types.

They also produce building materials through several quarries and production plants (aggregates, asphalt, concrete, steel constructions...).



Renovation and conversion of the Verhaegen building

Founded in Brussels in 1967, Jacques Delens is a leading general construction and property development company active mainly in the Brussels region. For nearly 60 years, it has built a strong reputation for its expertise in construction, renovation, and the modernization of projects for both the public and private sectors, including housing, healthcare, offices, schools, and various public buildings. Its approach combines technical expertise and a commitment to sustainability.

In 2025, Jacques Delens strengthened its position as a leading player in the renovation and energy-efficiency markets, which have become essential in the Brussels region. This expertise enabled the company to take on unique projects, such as the works at Peterbos Park in Anderlecht, launched in 2024, where Jacques Delens is contributing to both urban and social transformation while facing technical, structural, and organisational challenges.

Circular renovation also characterised the past year, notably with the continuation of the conversion of a former gendarmerie accommodation into social housing units, with maximum re-use of existing materials and sustainability.

Among the flagship achievements of 2025, the new building of the “Domaine du Neckersgat” care home in Uccle was delivered and welcomed its residents. The second phase, currently underway, aims to restore the historic buildings – the castle and the hospital wing – to their original appearance.

Finally, Jacques Delens secured strategic contracts, including the first phase of the HospitaCité project for the Saint-Luc University Clinics. This project demonstrates the company’s technical mastery and adaptability in sensitive environments, whilst ensuring the continuity of hospital activities.

PROJECTS SIGNED IN 2025

**VERHAEGEN
BRUSSELS, BELGIUM**
Renovation of a residential building and conversion of a garage into a food hall, as part of an urban renewal contract.

**SAINT-LUC UNIVERSITY CLINICS
BRUSSELS, BELGIUM**
Dismantling, asbestos removal, and demolition of buildings along with extensive construction works and various infrastructure developments supporting the transformation of the site of the future hospital tower for the HospitaCité project.

**ANVERS
BRUSSELS, BELGIUM**
Renovation and insulation of the building envelope including the installation of a ventilation system for two occupied residential buildings.

FLAGSHIP PROJECT

GALILEO

Carried out for EPHEC – Haute École Galilée, this project involved the extensive transformation of four interconnected buildings located on Rue Royale, in Schaerbeek. Demolition works, a new extension, renovation of a listed building, reconfiguration of teaching spaces, and exterior landscaping were all part of this ambitious project, conducted on a fully operational educational site and requiring complex phasing. In total, 8,300 m² of new and renovated areas, 2,500 m² of façades, and 3,000 m² of roofing were delivered, all within a dense and highly constrained urban environment.

The project is rooted in a sustainable and heritage-driven approach in the heart of Brussels, prioritising material re-use, energy performance, and the enhancement of existing heritage assets.



Renovation of the Haute Ecole Galilée

Location
Brussels, Belgium

Client
Haute Ecole Galilée

Architect
Atelier d’architecture Matador

Construction period
2022 - 2025

Project value
EUR 14.5 million

8,300 m²
of new and renovated surfaces

2,500 m²
of façades



Extension of the Philharmonie Luxembourg

LuxTP is a general construction company operating in both the public and private sectors. Its expertise covers buildings, civil engineering works such as bridges and tunnels, roadworks and car parks, infrastructure works, single-family homes, as well as railway platforms and equipment. Thanks to its experience and qualified staff, LuxTP is among the most important companies in the construction sector in the Grand Duchy of Luxembourg.

After a difficult year in 2024, marked by a decision from the Luxembourg government to declare certain branches of the construction sector in crisis for six months, the volume of new orders in 2025 almost doubled compared to the previous year.

Generally speaking, the turnover achieved in 2025 was lower than in previous years, due to the economic climate and the types of projects that were tendered in 2024 and carried out in 2025. The 2025 portfolio contained mostly structural work. Despite the relatively low margins generated on the various projects, LuxTP managed to record a slight profit in 2025.

The metal construction activities, which LuxTP carries out through its subsidiary Mabilux, also performed well last year. As was the case for LuxTP, the number of projects completed by Mabilux in 2025 was much higher than in 2024, but their size was significantly smaller.



Extension of the Maison Relais in Capellen

PROJECTS SIGNED IN 2025

SCHOOL CAMPUS IN CAPELLEN MAMER, LUXEMBOURG

Extension of the Maison Relais with a new school and after-school building. The project includes classrooms, workshops, dining halls, and a media library. The ground floor is concrete, and the two upper floors are timber-framed, accommodating up to 210 children. LuxTP is responsible for the structural and external works since April 2025.

EXTENSION OF THE PHILHARMONIE LUXEMBOURG

After completing the Philharmonie Luxembourg between 2003 and 2005, LuxTP was also awarded the contract for its extension, which will be built over two levels. It will feature a multi-purpose room for workshops, conferences, productions for young audiences, educational and community projects, and receptions. The artists' and staff cafeteria and the dining area will also be expanded.

COACH DEPOT FRIDHAFF, LUXEMBOURG

This project involves the construction of a new modern bus depot and an administrative building for a longstanding LuxTP client, Voyages Emile Weber. The site includes functional infrastructure for parking, maintenance, and operational management of the bus fleet, as well as administrative spaces designed to offer an efficient and sustainable working environment.

FLAGSHIP PROJECT

NEW HEADQUARTERS OF THE RED CROSS

The project involves constructing a building designed to meet stringent functional requirements and standards of sustainability and comfort. The structure will feature five above-ground levels, with a gross area of approximately 13,400 m², and two basement levels providing 155 parking spaces and a delivery dock. The reinforced concrete building is U-shaped, with a central atrium/patio covered by a glass roof. The façades are made up of wood/aluminium frames, facing bricks, and architectural concrete elements. The aim is to ensure a high-performance building that complies with technical and environmental standards, offering optimised spaces for Red Cross activities while guaranteeing comfort and quality of life for its occupants.



New headquarters of the Red Cross

Location
Grand Duchy of Luxembourg

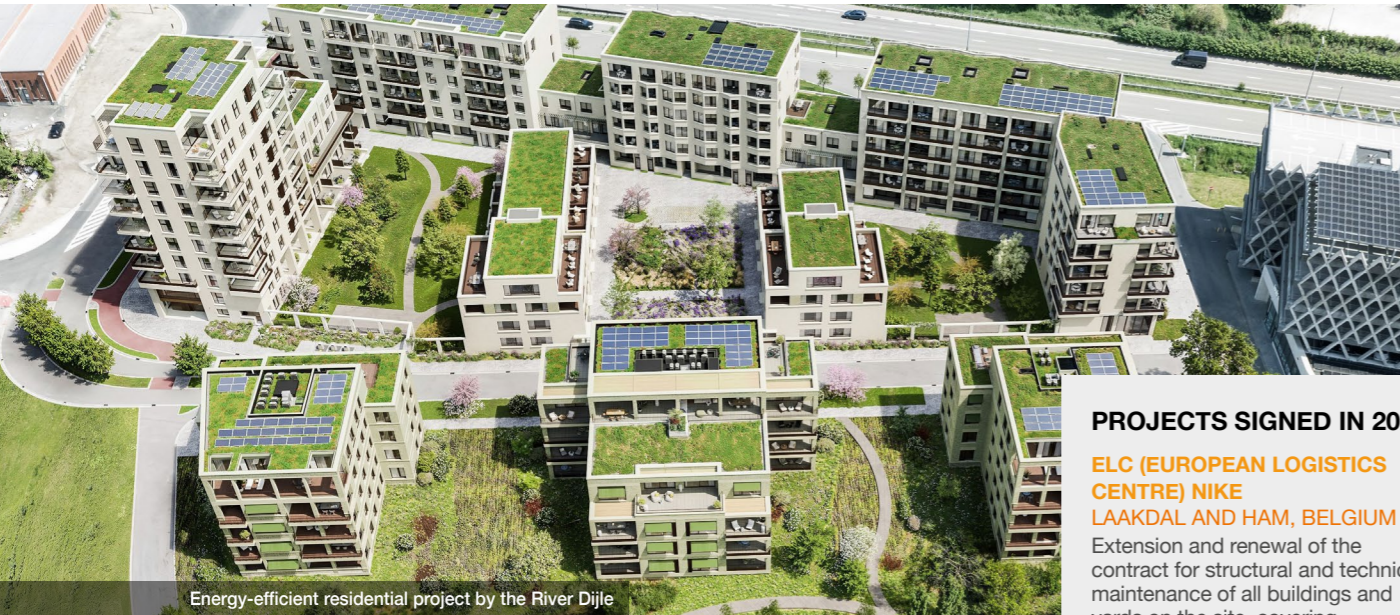
Client
IKO Real Estate

Construction period
Late 2023 - Summer 2026

Companies
Temporary joint venture
CLE-BESIX-LuxTP

Project value
EUR 58 million

 **13,400 m²**
approximate gross area



Energy-efficient residential project by the River Dijle

Vanhout Group is a multidisciplinary construction company which develops living environments where people can feel at home, work, and relax. Its various subsidiaries and building teams work on a range of construction and development projects, including offices, public buildings, residential spaces, schools, care facilities, and swimming pools.

In 2025, the Vanhout group strengthened its market position as a diversified construction group in the building and industrial sectors, closing the year with a well-filled order book. Contractor Vanhout and property developer Vanhout Projects remain the driving force of the group, leading a series of strategic projects across Flanders and Brussels. Contractor Vanhout delivered various projects focusing on energy-efficient renovations, as well as residential and industrial developments. The collaborative building team model resulted in high-quality outcomes and excellent client satisfaction, as demonstrated by the progress of Project One for INEOS, the extension of the BESIX Infra and BESIX Unitec headquarters, and the sustainable renovation of the Flemish Administrative Centre in Mechelen.

Vanhout Projects focused on local, affordable, and future-proof residences in the Kempen region, delivering projects in Weelde

and Heist-op-den-Berg. ComTIS Services further expanded its activities in professional building maintenance. Within sustainable technical installations, ComTIS Energy secured the ESCO contract for heat supply to 160 apartments in the Wattland residence in Mechelen.

Energieconcepten strengthened its position in energy-efficient installations for private individuals and SMEs. Isoparls achieved stable growth in the EPS market. CIRCL continued to build its innovative position in modular and circular house construction, with a growing number of completed homes and positive client feedback.

PROJECTS SIGNED IN 2025

ELC (EUROPEAN LOGISTICS CENTRE) NIKE LAAKDAL AND HAM, BELGIUM

Extension and renewal of the contract for structural and technical maintenance of all buildings and yards on the site, covering 600,000 m² of building space. Maintenance by ComTIS Services.

WATTLANDT MECHELEN, BELGIUM

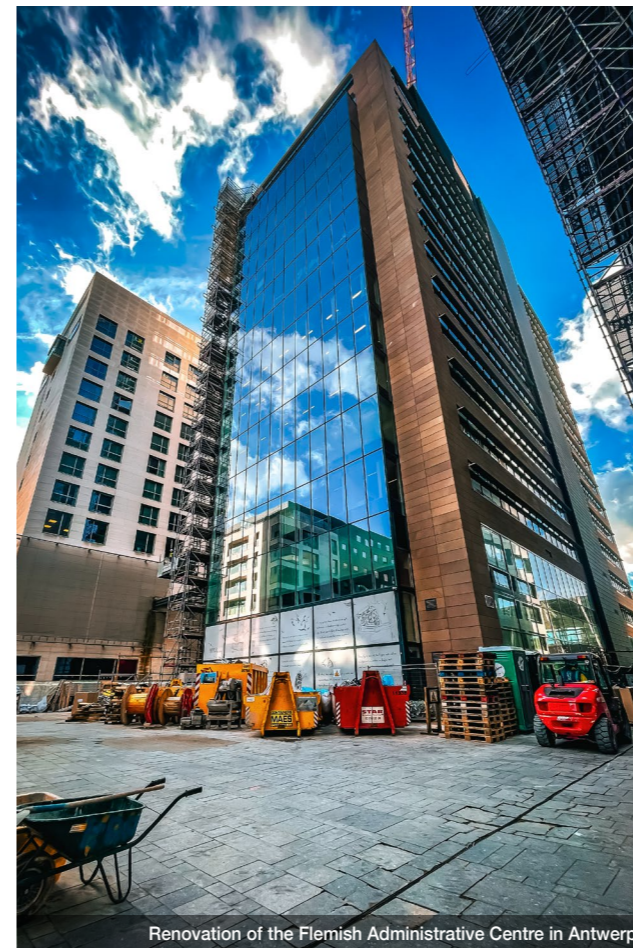
Construction of an energy-efficient residential project with 197 homes by the River Dijle. These homes will be heated and cooled using geothermal energy, solar panels, and heat pumps. ComTIS Energy is responsible for the ESCO.

BOUWCAMPUS 2.0 DIEPENBEEK, BELGIUM

Construction of an office and research building for POM Limburg and the Province of Limburg. The entire building is designed in BIM and will be constructed fully modular and circular. ComTIS Energy is responsible for the ESCO.

NEAR-SURFACE NUCLEAR WASTE DISPOSAL FACILITY DESSEL, BELGIUM

Construction of an above-ground storage facility for low- and intermediate-level radioactive waste for ONDRAF/NIRAS, the Belgian agency for radioactive waste management. This includes the construction of 20 concrete modules with technical equipment, a workshop building, and a building for tanks connected to the drainage system of each module.



Renovation of the Flemish Administrative Centre in Antwerp

FLAGSHIP PROJECT

RENOVATION OF THE FLEMISH ADMINISTRATIVE CENTRE ANTWERP (VACANT)

This extensive project encompasses the renovation of blocks B and C of the Flemish Administrative Centre Antwerp on the Mediaplein. The works take place in two phases, and the building remains operational throughout the process. Through collaborative building teams, Vanhout continuously optimises design and execution. The renovation follows the GRO principles: retaining existing structures, making circular choices, and using energy-efficient techniques. With new public zones and green roofs, the centre will become a futureproof and functional working environment in the heart of Antwerp.



Renovation of the Flemish Administrative Centre

Location
Antwerp, Belgium

Client
AG Real Estate

Architect
51N4E

External partners
Bopro, eld and IRS

Construction period
2024 - 2026

Project value
EUR 64 million

 **29,229 m²**
total area

 **GRO**
renovation according to sustainability principles



Equilis (Site Henricot 2) residential complex



Tee View residential development



Centre for Contemporary Ecotechnologies and New Materials at UMons

PROJECTS SIGNED IN 2025

**EQUILIS – SITE HENRICOT 2
COURT-SAINT-ETIENNE, BELGIUM**

Construction of the first phase of a residential complex comprising 52 flats.

**CORES DEVELOPMENT – TEE VIEW
DURBUY, BELGIUM**

Construction of 29 flats on the Durbuy Golf site, in a joint venture with Socogetra.

**MITISKA – REFURBISHMENT OF
CORA HYPERMARKETS
CHÂTELINEAU AND ROCOURT,
BELGIUM**

Transformation of the Cora hypermarkets in Châtelaineau and Rocourt into new retail spaces, in a joint venture with Franki Foundations.

**ACADEMIES OF BINCHE
BINCHE, BELGIUM**

Construction of a new complex bringing together the music and fine arts academies, as well as an adult education institute. The project also includes the renovation of the Paternotte castle to house the administrative part of the site. The project is carried out in a joint venture with Galère.

WUST is a general contractor operating in Wallonia and the Grand Duchy of Luxembourg. With over 90 years of experience, the company delivers large-scale projects across all areas of construction. Its property development department, metal construction workshops, concrete prefabrication, and reinforcement workshops complement its range of services.

Wust's activities were particularly buoyant in 2025, fuelled by a substantial order book and major projects.

Public sector contracts were mainly driven by energy renovation, whether for housing or administrative buildings. At the same time, private initiatives led to the signing of significant contracts during the year, including the ambitious Tee View project on the Durbuy Golf site and the construction of around a hundred flats for the developer Equilis in Court-Saint-Etienne, as well as the refurbishment of the Cora hypermarkets in Châtelaineau and Rocourt.

The Institut Roi Albert II in Woluwe-Saint-Lambert (Brussels), the Eco-Technologies building at UMons, and the La Louvière Police Station are among the major projects that were completed in 2025. The renovation of the Grand Théâtre de Verviers is ongoing, alongside the Forem Training Centre in Jemappes, the Hospitality

Campus of the Province of Namur, and the ESA Cybersecurity Centre in Redu, to name but a few of the many projects currently managed by Wust's teams.

Strategically, the synergies established over many years between Wust and Cobelba resulted, as of January 2026, in a single structure, both teams now operating under the Wust banner (the Naninne headquarters becoming an operational site). This development aims to strengthen the company's position in Wallonia and the Grand Duchy of Luxembourg, while ensuring continuity of services and the historic partnerships initiated by both entities.

FLAGSHIP PROJECT

UMONS - ECOTECH

Wust built the Centre for Contemporary Ecotechnologies and New Materials at UMons. The building, dedicated to materials science, brings together a state-of-the-art technology platform, training spaces, laboratories, and a research facility. It covers a total area of 7,300 m², spread over six floors.

Carried out as a Design & Build contract, EcoTech is one of the first projects of this scale in Wallonia to be assessed according to DNSH ("do no significant harm") requirements. The QZEN standards were exceeded, with K19 and Ew29 levels, and the building boasts an exemplary carbon footprint in relation to its size. The project is part of the Walloon Recovery Plan, financed by the European Union – NextGenerationEU.

Location
Mons, Belgium

Client
University of Mons (UMons)

Architects
ReservoirA and Artbuild

Construction period
January 2024 - June 2025

Project value
EUR 25 million

7,300 m²
gross floor area

carbon footprint limited to **585 kg CO₂**
equivalent/m²



SPECIALISED CONTRACTOR



BESIX Environment is a Design & Build and EPC contractor which integrates advanced technologies in the water and energy sectors in Belgium, the Grand-Duchy of Luxembourg and The Netherlands. Its in-house expertise spans bio-chemical processes and electromechanical works and hydraulics, enabling the company to deliver projects from business development through to operation and maintenance. Its scope includes wastewater treatment and potable water production systems, sludge-to-energy solutions, pumped hydro systems and green hydrogen production.



De Gavers potable water treatment plant

Established as a separate legal entity in 2022, BESIX Environment has achieved remarkable growth, increasing its turnover fivefold in just a few years. In 2025, the company strengthened its position as a key player in water and energy infrastructure, reinforcing its role in emerging markets such as green hydrogen.

Within the Hyoffwind project – Belgium’s first large-scale green hydrogen production facility – the company progressed significantly as part of a joint venture with BESIX and John Cockerill Hydrogen Belgium.

In partnership with Socogetra, works continued on two major wastewater treatment plants in Trivières and Seneffe (Belgium), increasing the capacity of the existing facilities to 25,000 and 40,000 EH respectively. The company also supported EPC works for Aquafin’s sludge mono-treatment plant in Ghent (Belgium) and initiated pre-operational activities for its future Operation & Maintenance scope with partner Indaver. In the potable water sector, the electromechanical and process installations on the De Gavers water production centre in Harelbeke (Belgium) are close to completion, while works aiming at delivering high-capacity production

have started on the Nieuwerkerken (Belgium) facility, both in partnership with BESIX Unitec.

In The Netherlands, BESIX Environment contributed to the AWZI Haarlem Waarderpolder wastewater treatment plant, designing advanced pre- and post-treatment systems and biological processes.

In the Grand-Duchy of Luxembourg, the joint venture with LuxTP is advancing the electromechanical installation of a wastewater treatment plant, focusing on initiating sludge digestion and biogas production.

FLAGSHIP PROJECT

HYOFFWIND ZEEBRUGGE, BELGIUM

BESIX Environment is driving the design and build of key systems for Belgium’s largest green hydrogen facility, Hyoffwind (25 MW). Its scope covers demineralised water systems, cooling circuits for electrolyzers and compressors, industrial MEP works, hydrogen piping and equipment installation, from development to commissioning and start-up. Through early business development efforts, BESIX Environment secured this pioneering project, forging links with the electrolyser technology partner and reinforcing BESIX Group’s diversification into sustainable energy. Set to deliver its first green hydrogen molecules by end-2026, Hyoffwind positions Belgium as a leader in the energy transition, supplying industry and mobility while enabling a cleaner future.



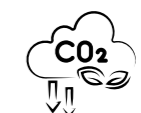
Hyoffwind green hydrogen facility



Hyoffwind green hydrogen facility

- Location**
Zeebrugge, Belgium
- Client**
Hyoffwind (Virya Energy + Messer)
- Partner**
John Cockerill Hydrogen Belgium
- Construction period**
February 2025 - end of 2026
- Project value**
EUR 72 million of which
 - EUR 17 million for BESIX Environment
 - EUR 13 million for BESIX

4,000 tonnes of H₂/year produced, equivalent to a CO₂ reduction of **25,000 tonnes/year**





Installation of a separate sewerage system in Hoogkameren

BESIX Infra is a leading contractor in infrastructure works, active in Belgium and The Netherlands. BESIX Infra Nederland is evolving from a local player to a regional partner, with projects in Limburg and North Brabant, which significantly strengthens its position in the market. In Bilzen and Burcht (Belgium), BESIX Infra operates its own concrete and recycling site. Additionally, subsidiaries Belasco and BESIX Infra Nederland have four asphalt production plants of their own.

BESIX Infra looks back on a year in which several key projects gained full momentum. The R4 West and East project around Ghent, where a large team is active, forms an important pillar in this regard. This large-scale project is making the R4 smoother and safer by redesigning and making traffic intersections entirely conflict-free, improving cycling infrastructure, and creating more practical connections for the surrounding municipalities.

BESIX Infra is also making a significant contribution to the renewal of Antwerp's mobility through the Oosterweel Link project, via TM ROCO. In 2025, an important milestone was achieved: the Bypass towards The Netherlands was completed and opened, including asphaltting works carried out by subsidiary Belasco.

Other projects also continued unabated. Stadslus, a technically complex site

involving sewerage and roadworks in the historic centre of Antwerp, is progressing according to plan. In Bilzen, BESIX Infra, together with BESIX, is replacing seven railway crossings on behalf of TUC Rail.

The year also brought recognition: during the Aquafin Awards, BESIX Infra was named best contractor of 2025. This is a valuable confirmation of trust from its largest client.

Internally, the large-scale renovation of the headquarters in Schelle was completed. The renewed location was festively inaugurated with a client event and a family day for employees.

PROJECTS SIGNED IN 2025

**SEWERAGE WORKS
HOOGKAMEREN
SINT-NIKLAAS, BELGIUM**

BESIX Infra is carrying out this project on behalf of Aquafin and the City of Sint-Niklaas, involving the installation of a separate sewerage system along a 5.4-kilometre route, combined with the complete renewal of the road surface.

**RILROHEIDESTRAAT
BEERSEL, BELGIUM**

This project, commissioned by Farys and the Municipality of Beersel, includes the complete redevelopment of the Rilroheidestraat and surrounding streets, including the installation of a new separate sewerage system and the renewal of the carriageway.

**SEWERAGE WORKS
DIETS - HEUR
TONGEREN, BELGIUM**

Complete reconstruction of road infrastructure and sewers. The project improves water management, increases road safety, and provides the village centre with a sustainable and renewed public space. It is being carried out in collaboration with Fluvius, the City of Tongeren, and the Province of Limburg.

**VARIABLE MAINTENANCE
WORKS OF PAVEMENTS AND
STRUCTURES (VOVK-ZN)
A76 MOTORWAY
THE NETHERLANDS**

Comprehensive maintenance of the A76 on behalf of Rijkswaterstaat (the executive agency of the Dutch Ministry of Infrastructure and Environment), during which the motorway was closed for 12 days and approximately 40,000 tonnes of asphalt were replaced, along with various works on viaducts.

FLAGSHIP PROJECT

**REDEVELOPMENT
OF THE STRIJDESLAAN**

This project was awarded with a CO₂ advantage in the tender process. BESIX Infra is investing in the electrification of equipment and is testing an expansion of its range with rammers, core drilling and concrete sawing machines. This construction site does not use diesel generators; instead, 100% green electricity is supplied via additional grid connections and on-site green production. The office container is equipped with solar panels and a battery, developed by BESIX Infra's equipment department and implemented by Vanhout subsidiary Energieconcepten. Broken-up paving is being reused as much as possible, and the foundations contain less cement. The project serves as a dialogue platform with the client: energy and CO₂ data are analysed in order to further improve sustainability in future projects and to continue developing innovative solutions.



Redevelopment of the Strijderslaan



Redevelopment of the Strijderslaan

Location
Hamme, Belgium

Clients
Aquafin and the municipality of Hamme

Construction period
March 2025 - today

Project value
EUR 7 million

6,500 tonnes
on-site reuse of broken-up road material

5,900 kWp
of solar panels and a 10 kWh battery



Field technician working on the Orange coaxial network



Modification of the DN500 water main

BESIX Unitec positions itself as a technology partner within the infrastructure market, playing a key role in the design, construction, and maintenance of automated public infrastructure and networks. Clients can rely on comprehensive solutions that cover the entire life cycle of installations: from concept and engineering, through execution, to operation and sustainable maintenance.

Looking back, last year saw numerous projects that were initiated, further developed, or successfully completed. The Train Tunnel Installation (TTI) of Kennedyspoor (Antwerp, Belgium) was commissioned, and the lock in Vlissingen (Province of Zeeland, The Netherlands) was the first to be converted to a new operating system. The commencement order for the Scheldt Tunnel (part of the Oosterweel link in Antwerp, Belgium) was signed, enabling work to begin on this challenging project once all components have been installed. Works on the Krammer locks (Bruinisse, The Netherlands) started this year, while the works on the Beverentunnel (Antwerp, Belgium) were completed. In Seraing (Belgium), BESIX Unitec made the first cable connection for the new power station, and at the Meulestedebrug (Ghent, Belgium), the second bridge drive, that of the South Bridge, was successfully linked.

In addition, two significant openings took place: the new site in Hendrik-Ido-Ambacht (The Netherlands) and the shared site with BESIX Infra in Schelle (Belgium). Unity, one of the core values within BESIX Group, was clearly demonstrated in this project realised through collaboration with strong partners such as BESIX Infra, Vanhout, BESIX Power, Franki Foundations, and HBS. Sustainable interventions – including solar panels, rainwater harvesting, de-paving, green spaces, and charging infrastructure – will prove their added value both in the short and long term. The layout of the building with functional spaces tailored to work activities is also an innovation that encourages focused work, as well as promoting collaboration and movement.

PROJECTS SIGNED IN 2025

EXTENSION OF HOUSEHOLD CONNECTIONS AND NEW FRAMEWORK CONTRACT FOR ORANGE COAXIAL NETWORK FLANDERS, NAMUR AND LIÈGE, BELGIUM

In Flanders, BESIX Unitec continues to provide household connections (TV and internet) via coaxial and fibre optics on behalf of Orange. In Wallonia, the company has signed a new contract for the construction and maintenance of the existing coaxial network.

MODIFICATION OF DN500 WATER MAIN ANTWERP, BELGIUM

Commissioned by Water-Link, BESIX Unitec's Underground Infrastructure division will modify a DN500 water main in the Desguinlei, Lange Elzenstraat, Kielsevest and Jongelinckstraat in central Antwerp.

LUCHTBAL-HAVANA SITE DISTRICT HEATING NETWORK ANTWERP, BELGIUM

For Fluvius, BESIX Unitec is installing a district heating pipeline on the Luchtbal and Havana site. Its Water & Heat division is also responsible for PFAS installations for the purification of dewatering water. Previously, the boiler house and heat transfer station had already been awarded.

FLAGSHIP PROJECT

COMPLETE RENOVATION OF THE BEVEREN TUNNEL

The TM Bever consortium has completely renovated the Beverentunnel, both structurally and technically. The tunnel now stands as a benchmark for tunnel safety in Europe. The comprehensive makeover included new emergency exit doors, an automated announcement system, segregated technical rooms, and an upgraded ventilation system. For sustainability, a solar panel park and a water purification plant have been added.

The project was fully developed using BIM, and thanks to smooth collaboration with a focus on safety, transparency and well-being, it has become a great success.



Renovation of the Beveren Tunnel

Location
Antwerp, Beveren-Kruibeke-Zwijndrecht, Belgium

Client
Agentschap Wegen en Verkeer

Construction period
April 2024 - November 2025

Project value
EUR 125 million



750
solar panels supplying 50% of the tunnel's electricity needs



3,600,000
litres/day treated by a water purification plant



SPECIALISED CONTRACTOR



In 2025, Franki Foundations was active on more than 500 construction sites across various sectors. Aiming to be an integrated partner for its clients, it provides comprehensive and tailor-made foundation solutions. The company has an experienced in-house design office, a strong equipment fleet, and a highly skilled workforce.

As anticipated at the close of 2024, the first months of 2025 were challenging for Franki Foundations, primarily due to limited activity while awaiting the launch of major infrastructure projects. The real estate and industrial markets remained subdued until the arrival of summer. The second half of the year brought renewed momentum as D-Wall works commenced on the ROCO project (part of the Oosterweel link, in Antwerp) and the R4 West and East project in Ghent. Several noteworthy piling contracts were also secured, including the Agristo project in Escaudoeuvres, France, delivered by subsidiary Atlas Foundations, and the construction of the seventh data centre for Crystal Computing in Ghlin, Belgium, executed in partnership.

Franki Grondtechnieken benefited from favourable market conditions in The Netherlands, enabling extensive activity across significant projects such as

De Nieuwe Meer in Amsterdam, Waldorp Four in The Hague, and Porthos in Rotterdam for Air Liquide. The order from PALLAS in Petten for a secondary pit highlighted the team's technical proficiency, with the project distinguished by complexity and the integration of soil mixing, anchors, and underwater concrete.

In September, Franki Foundations completed the sale of its UK subsidiaries. This strategic decision allows the company to concentrate on its core markets in Belgium, The Netherlands and France, as well as on selected international projects.

The year 2025 ultimately concluded with a record order book for Franki Foundations, largely comprised of major projects running through to 2027, while smaller and mid-sized ventures continue to face considerable pressure.



PROJECTS SIGNED IN 2025

**WALDORP FOUR
THE HAGUE, THE NETHERLANDS**
Sustainable foundations for Waldorp Four, the largest modular building in The Netherlands. On a narrow site, 875 screw piles are being installed, with the reuse of drilling slurry and savings on steel and cement.

**PURE – LA MADELEINE
LILLE, FRANCE**
A wide range of foundation and reinforcement techniques (secant piles, injections, guide walls, walers, struts and anchors) are being employed by French subsidiary Atlas Foundations on this 8,000 m² project developed by BESIX RED, following the demolition of existing piles.

**COMMUNITY BUILDING
HEVERLEE (LEUVEN), BELGIUM**
In a small excavation pit, installation of 167 screw piles with a diameter of 760 mm and a bearing capacity of 4,200 kN UGT, each 17.5 metres long. Both vertically and at an incline, the sandy subsoil was overcome using specialised techniques.

**ELIA-LUMINUS
SERAING, BELGIUM**
Construction of a Kelly pile wall with a diameter of 880 mm to secure the excavation and recover a drill head at a depth of 10 metres, as part of the connection of an Elia substation to the Seraing CCGT power plant. The project, located close to a Natura 2000 area, was successfully carried out in collaboration with BESIX Unitec and Socogetra, despite significant constraints.

FLAGSHIP PROJECT

GO4ZERO

Franki Foundations was selected as the piling contractor for Holcim's state-of-the-art cement plant, a visionary project designed to decarbonise operations and lead the way toward a sustainable future. The teams installed over 1,760 Omega piles and 115 driven tubular piles in the least accessible areas of the site. By the end of last year, Franki Foundations also completed a 126 m long secant pile wall for two pits, including 9 m of excavation and underwater concrete. Working in collaboration with BESIX and Denys, Franki Foundations adapted its methods to every site constraint, using smaller rigs where needed and working evenings or weekends to ensure smooth progress without disrupting other contractors. In addition, the company installed 500 driven piles at the GO4ZERO site in Vaulx.



GO4ZERO, Holcim's sustainable cement plant



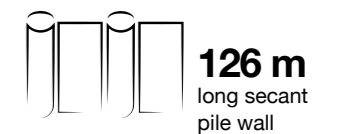
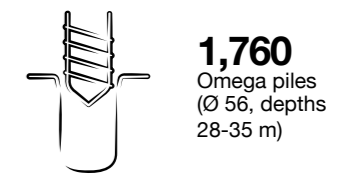
Deep foundation works for a community building in Heverlee

Location
Obourg (Mons), Belgium

Client
Holcim

Construction period
August 2024 - January 2026

Project value
EUR 14 million





**SPECIALISED
CONTRACTOR**



Reconstruction of the Pont Capitte

With over 75 years of experience, the Socogetra group is a major player in the construction sector in Belgium. Active in road and rail works, civil engineering, and building projects, the company relies on an extensive industrial network in Wallonia. As a Class 8 accredited company, Socogetra undertakes projects of all sizes thanks to its recognised expertise.

The year 2025 was in line with previous years, resulting in a stable turnover. As in 2024, public investment in roads remained insufficient in 2025, affecting the asphalt operations in Marche-en-Famenne, Aubange, and Bastogne, as well as the sandstone quarry in La Roche-en-Ardenne. Conversely, the limestone quarry Carrière des Limites, in Wellin, exceeded 1.6 million tonnes in production.

The concrete division continued to grow, despite competition in the province of Namur, and benefited from favourable conditions in Luxembourg. Socogetra's industrial projects were also significant, including the GO4ZERO project (civil works on a decarbonised cement production facility for Holcim) in Obourg, and the construction of a pumping station with two reservoirs in Ghlin.

Socogetra's Liège-based subsidiary Vialines, confirmed its strength and the quality of its road marking activities.

In 2025, the company's industrial investments also reached a milestone with the start of the construction of the new asphalt plant in Bastogne, developed with its partner Karp-Kneip and featuring particularly innovative ecological equipment. At the end of the year, Socogetra acquired a 70% stake in Béton Refect SA, a leading player in concrete rehabilitation in Wallonia.

Socogetra continued its ESG momentum, finalising its carbon footprint, its CO₂ performance ladder, and its ESG report.

The order book allows Socogetra to approach 2026 with confidence, with a significant carryover already planned for 2027.

PROJECTS SIGNED IN 2025

**PONT CAPITTE
LA LOUVIÈRE, BELGIUM**

Demolition and reconstruction of the nearly century-old Pont Capitte. The works include the demolition of the existing structure, civil engineering works, road construction, installation of footbridges, and placement of major metal elements.

**REHABILITATION OF THE N89
BOUILLON, BELGIUM**

The project involves resurfacing, securing the Beaubru junction, and renovating the Morsehan viaduct, covering a stretch of 4 km in both directions. In total, 15,300 tonnes of asphalt will be laid over an area of 56,800 m², in collaboration with LEG Group.

**RE-ELECTRIFICATION AND
LINEAR CIVIL ENGINEERING ON
RAILWAY LINE 162
SECTION BETWEEN HAVERSIN
AND MARLOIE, BELGIUM**

Socogetra, in partnership with Duchêne, will carry out catenary works, civil engineering, and signalling for TUC RAIL/Infrabel over a three-year period.



RER railway works through the Sonian Forest



RER infrastructure works

FLAGSHIP PROJECT

RER – LINES 161 AND 124

On 16 June, a key milestone was reached: the RER now runs on four tracks between Watermael-Boitsfort (Brussels) and La Hulpe. In Watermael-Boitsfort, a 30-metre underpass was constructed to improve station accessibility. In the Sonian Forest, an underpass was built using the Stross method (without open-cut excavation). A massive 360-tonne slab was installed in a single weekend. At Groenendael, a 300-metre platform was built and two pre-stressed trough bridges were installed (manufactured at Socogetra's workshop in Frameries). The Boitsfort tunnel, over one kilometre long, was completed at the start of 2025, with platforms and emergency exits. These works enhance the network's capacity and accessibility and provide travellers with a more reliable and smoother service.

Location
Between Watermael-Boitsfort and La Hulpe, Belgium

Client
TUC RAIL

Design office
TUC RAIL

Construction period
January 2020 - June 2025

Project value
EUR 62 million

17 sites
(14 on line 161, 2 on line 124, and the Schuman-Josaphat tunnel)